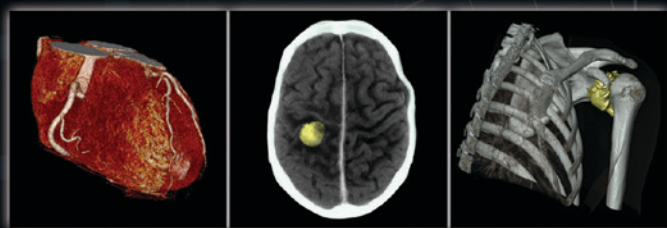


**Clearpath**  
Diagnostics, LLC  
A PATH TO A HEALTHIER LIFE



**Clearpath**  
Diagnostics, LLC  
A PATH TO A HEALTHIER LIFE

25354 Evergreen Road  
Southfield, Michigan 48075  
Tel: (248) 402-1222 • Fax: (248) 809-6862  
[www.clearpathdiagnostic.com](http://www.clearpathdiagnostic.com)



STATE-OF-THE-ART  
MEDICAL DIAGNOSTIC  
IMAGING

25354 Evergreen Road  
Southfield, Michigan 48075  
Tel: (248) 402-1222 • Fax: (248) 809-6862  
[www.clearpathdiagnostic.com](http://www.clearpathdiagnostic.com)



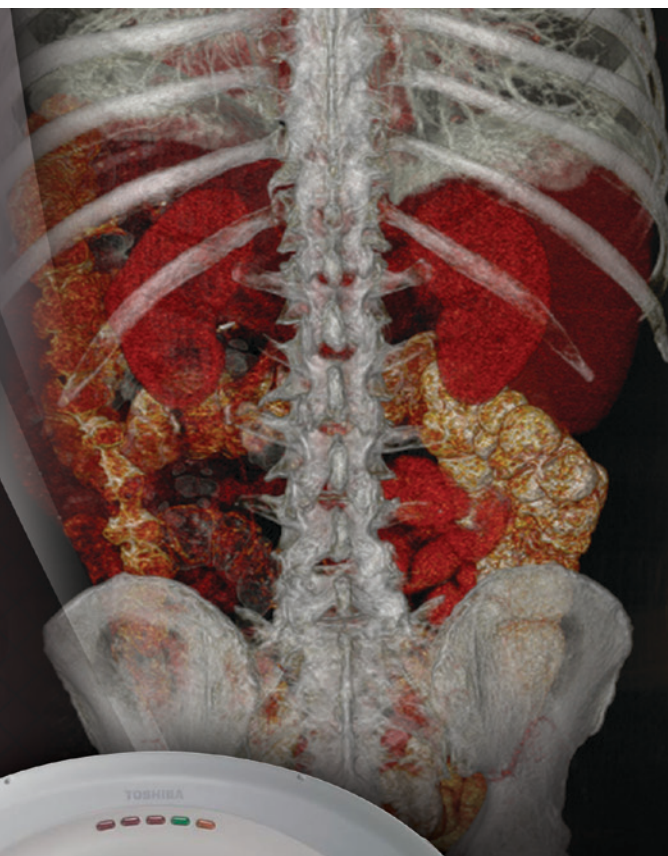
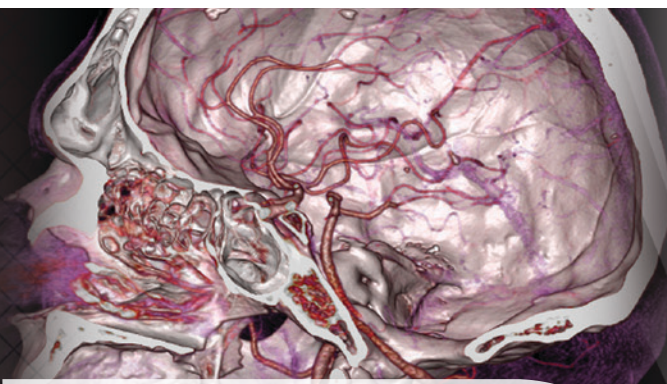


To make CT exams as fast, safe and accurate as possible for patients, Clearpath Diagnostics, in Southfield, Michigan, has installed the Aquilion<sup>TM</sup> PRIME CT system from Toshiba America Medical Systems, Inc. Aquilion PRIME provides faster exams at as low as reasonably achievable doses, while producing high-quality images required for accurate diagnosis.

The speed of the Aquilion PRIME enables our clinicians to obtain critical patient information for enhanced diagnosis faster than before. The design of the Aquilion PRIME allows us to successfully image a range of patients, from pediatric to bariatric, to further improve patient safety and comfort in our community.

The Aquilion PRIME's large bore opening offers a more spacious feeling for patients, while a higher table weight limit expands the range of patients who can be imaged. In addition, the Aquilion PRIME comes standard with industry leading dose-reduction software.

The Aquilion PRIME is another example of our commitment to developing advanced technology designed for today's hospitals, enabling them to perform fast, low-dose exams that are safer and more comfortable for the patient.



**Aquilion** <sup>LB</sup>

